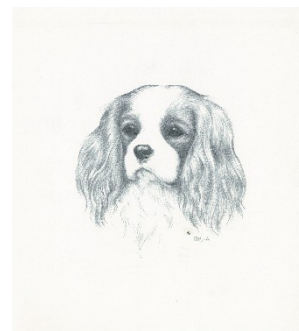
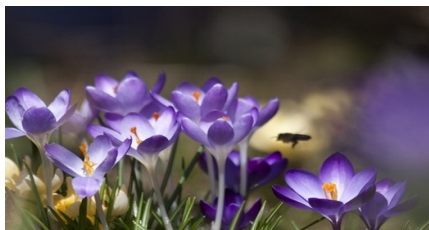


Cavalier King Charles Spaniel Club of Victoria

incorporated

Spring Newsletter 2018



2018 – 2019 Committee

President

Will Henderson Phone 03 97447377

cavpresident@cavalierclubvictoria.com

Vice President

Charlotte Taylor

Secretary

Joy McInnes

Call 0403 535 649

cavsecretary@cavalierclubvictoria.com

Assistant Secretary

Jacqui Giggins

Treasurer

Karen Taylor

cavtreasurer@cavalierclubvictoria.com

Membership Secretary

Jacqui Giggins

membership@cavalierclubvictoria.com

Rescue Services

Greg Browne

Phone 03 93941136

gregbrowne@bigpond.com

Committee Members

Jan Kelly

Aimee Petersen

Mat Moore

Andrew Twiddy

Geoff Beckett

Sandra Ingpen

Newsletter & Web page

Stephen

website@cavalierclubvictoria.com

Life Members.

Mrs. A. Bagnall, Mrs. P. Mrs. K. Beckett,

Ms. L. Bolden, Mrs. P. Fernleigh ,

Ms. P. Finnie, Mrs. B. Henry, Mr. E. Howden,

Mrs. D. Hunt, Mrs. J. McInnes Mrs. J. Ovendon

In this issue:

02. Presidents message AGM

03. Secretary's Message AGM

04. AGM 2018

05. Treasurers report

06. Open Show Results 18.11.18 show

12. Eye Article

13. Big Dog Day Out

15. Night of Nights Info Dogs Vic

16. Night of Nights Entry Form Dogs Vic

17. A- Z of Cavaliers

18. Royal Show Results.

The opinions expressed in this Newsletter are not necessarily those of the Editors or the Committee and Office Bearers of the CKCS Club of Victoria Inc. The Editor/s reserves the right to refer any material of a dubious nature to the Committee for final say in the matter of publication.

Cavalier King Charles Spaniel Club of Victoria Inc Proudly supported by



INCREDIBLE IN EVERY DETAIL

FROM THE PRESIDENT AGM

The CKCSC of Victoria has been in operation for 46 years and is one of Australia's most prestigious Cavalier Specialist clubs. I know I speak on behalf of all committee when I express that it is a great honor to continue to serve as your committee. I would like to make special mention and thank Andrew Twiddy for his work over the past 3 years in the role of Treasurer. Andrew has done a wonderful job of presenting our club finances in great order and I thank him for handing over the books in tip top condition to our new treasurer Karen Taylor.

Many thanks also to Linda and Ron Hocking for their service over the past few years on general committee, they have both undertaken several operational roles whilst on committee. I would like to make special mention of their recent work with our Perpetual Trophies and for undertaking the restoration work needed to ensure they continue to be in great condition to be enjoyed by exhibitors attending our Championship Shows for years to come. Andrew, Linda and Ron have decided to not re-stand for nomination this year.

In June, we welcomed Mr Ted Eubank of Pinecrest Cavaliers from the USA and Mrs Elaine Berwick of Merrylaine Cavaliers in the UK to judge our 51 st and 52 nd Championship Shows. We ran two successful days, with positive feedback from both judges on the management of our shows and the depth of quality in their entries. In a climate of falling entry numbers and breed registrations, I believe this enforces that our breed is still in great condition and bodes well for a continued, strong future ahead of us.

We look forward to welcoming to Australia for the first time in 2019 Mr Roger Madec of De La Geode Cavaliers from France and Mr Sean Martin of Glencross Cavaliers from Ireland.

We have suffered from stagnating entries for our Open Show over several years now and have trialled different options with little change to our entry numbers. In late 2017, we piloted the idea of running the Open Show in conjunction with an All Breeds Championship show and thank the Garden State Kennel Club for allowing us this opportunity. The day was extremely successful with trainee judge Dr Linda Beer of Deveron Gordon Setters, receiving a numerically strong entry. A well-run heart clinic was provided for members and a social, shared afternoon tea was enjoyed by exhibitors. Following it's success, the committee have decided to continue with this model and in November we will have trainee judge and longtime club member/breeder Mr Paul

Nichols of Dunsfold Cavaliers judging our 2018 entry. We hope to see many of you there.

We are a small committee of volunteers who each lead busy personal lives; we are only able to achieve so much as a group. We are very grateful to members who have provided their support this past 12 months in the running of events and fundraising activities.

I would like to make special mention and thank Judy Thomas for her donation to the club's rescue fund on the sale of the USA Cavalier Calendar, to Linda Hocking and helpers for managing the breed stand at the Melbourne Royal, to Karen and Charlotte Taylor for running a very successful Silent Auction at this year's Championship show and to Joy McInnes for the organization and fundraising from the sale of Cavalier vet bedding and the heart clinic.

We are living in an ever-changing environment legislatively and the expectation on us, in the eyes of the general public in particular, has never been as great as it is today. As responsible dog breeders, it is our responsibility to ensure that we all continue to promote our breed in a positive way and encourage new people to our hobby.

Lastly, I would like to pay my respects to long time member, breeder, exhibitor and judge Dr Richard Gilmour-Smith of Farnsmere Cavaliers, who sadly passed away peacefully in June. Richard was well known for his love of Wholecolour's, he imported the black n tan male 'Aust Ch Chamanic Centaurus' from the UK, who had an influence on the breed here in Australia. Rest peacefully Richard.

We are always keen to hear your ideas as to how we can make improvements in the running of the club, our calendar of events, fund raising endeavors and to look at other ways of promoting our beloved breed. Please contact myself and/or email your ideas to cavsecretary@cavalierclubvictoria.com where your suggestions will be forwarded on to the committee for further discussion at meetings.

Good luck to all those exhibiting at Melbourne Royal in September under Toy Specialist

Mr Francesco Cochetti from Italy.

Best wishes,

Will Henderson

President.

SECRETARY REPORT AGM

Here we are again at the end of another successful year for our club. Thank you for all the members who have supported the club this year. I wish to thank the out going committee members for their hard work thru the year. The following committee members are not restanding and we wish them all the best-Andrew Twiddy, Linda and Ron Hocking.

This year we have managed to hold both an Open show and a double Championship show. The Open show was held in conjunction with the Garden State club on their double show day at Bulla. we felt this format was a very successful format, and we plan to repeat in November.

I think every one would agree our recent Championship show weekend was fabulous.
available on our website and in the last newsletter.

To all our non committee members who helped us setup and assisted thru the day including packing up many thanks. We heard from many exhibitors how much they enjoyed the day. Once again we held a Heart Screen Clinic with Dr Geoff Nicholson which raised \$175 with Geoff donating \$5 from every dog back to the club.

We also had a special sale of cav designed dry bed in club colours -sold to us by petnetwork at greatly reduced price which made us a tidy profit. These fundraisers help offset the cost of running our championship shows. any other fundraising ideas are always welcome.

On a personal note I want to thank everyone for the love, support and sympathy we received on the sudden tragic death of our son Michael in may, the outpouring of love was truly amazing.

Corro OUT

27/3 Kezang designs advert for BIS Trophy thanks

APRIL 2018

4/4/18 Dogs Vic notify club judges payment sent incorrectly to them

19/4 royal Canin application for sponsorship

23/4 Dogs Vic reponse to request for levy for Cancelled Trial not held on 17/3/18

24/4 Dog Lovers Show promo info from RC informing Jan Kelly contact

MAY 2018

7/5 Judy Thomas thanking her for offer of Donation to club from calendar sales

9/5 Cass Cooper re Champ show

15/5 Gwenda Carr requesting to be VCA REP for champ show

18/5 Show Manager re buying separate catalogues for show

25/5 Janet Davidson with OS Judge Evaluation details

28/5 J Davidson clarifying OS Judge assessment

28/5 Petnetwork with Ad for catalogue

31/5 Showmanager breakdown of numbers for show thanks

31/5 Anna Bisak KCC Park ring arrangements cancelling lunch room

June 2018

1/6 Computer sashes invoice and clarifying order correct

3/6 Ted Eubank clarifying travel arrangement and pick up from airport

3/6 Elaine Berwick clarifying travel arrangements and pickup times

3/6 S Smith request for stall approval

3/6 C Darke request for stall approval

4/6 Royal Melbourne show request for club sponsorship approval & clarify classes

5/6 Ruth Cook catalogue files

5/6 Anna Bisak requesting key safe details first aid room

7/6 M Warren re arrangements for picking up from hotel and return

14/6 Sophia Yena response to request to review ckcs info on DV website

22/6 Ted Eubank critique reply

25/6 Elaine Berwick Critique reply

27/6 Vicki Warburton complaint re no info from club since Nov response

28/6 T Fernleigh Nomination for 2020 Ming Li response

28/6 *P Finnie & E Howden*

Agm apologies & response

Treasurers report:

Champ show breakdown

Voted to Appoint Wayne Fleming as the auditor for next financial year. All agreed.

M - Andrew Twiddy

S - Matt Morse

Honoraries (Will to attach)

M- Vivienne McLaughlan

S - Charlotte Taylor

Nominations 2018-19

New committee as below passed by attendees

Pres - Will Henderson

New Vice pres - Charlotte Taylor

Sec - Joy McInnes

Ass sec - Jacqueline Giggins

Tres - Karen Taylor

General committee - Jan Kelly, Aimee Petersen and Greg Browne

M - Matt Morse

S - Andrew Twiddy

New General Committee Member voted in off the floor- Aimee Petersen

M - Geoff Beckett

S - Sandra Ingpen

Membership fees to stay the same

Entry fees to champ show to stay the same

Next agm 6th of august 2019

Meeting closed at 7:55

TREASURER'S 2017-18 ANNUAL REPORT

In the 2017-18 Financial Year the Club made a profit of \$2395.05 in the General account and \$405 in the Rescue Account, and the overall assets of the Club were valued at \$22825.27. These assets were comprised of 3 elements:

- General Account \$8236.78
- Rescue Account \$7320.60
- Term Deposit \$7267.89

The Club Finances were audited On the 19th of July by W.M.Fleming Cert. IV in Financial Services (Bookkeeping)

To maintain and enhance the economic viability of the Club it will be crucial that members continue to take an active part in Club activities and any fund raising events the Club organizes.

The actual profit outcome is a little misleading however. It was done at the end of the financial year and could not take account of payments that had to be made post June 30 re the Championship Show. Specifically the Dogs Victoria Levies for Sunday and Monday plus the cost of the photographer amounted to \$1317.75

In addition, since I have been treasurer, and I believe prior to that, renew of Club membership were not called for until the start of the new financial year. This year they were called for earlier and they started flowing in in May and June to the tune of \$1124, which based on the 2017-18 Membership outcome, means that approximately 53%

of our Membership income appears in this financial year figures rather than in the 2018-19 books.

On behalf of the Club I would like to acknowledge the generosity of Judy Thomas who donated \$405 to the Club's Rescue Bank Account from the fundraiser for her chosen clubs with the calendar produced in the USA. In addition the work put in by Karen and Charlotte Taylor in organizing the Silent Auction at the Championship Show and the outstanding amount it raised. Thanks also to members who donated items for the Auction.

ANDREW TWIDDY

2017-18 FINANCIAL YEAR CKSCV REPORT

INCOME	GENERAL ACCOUNT	14677.84
	RESCUE ACCOUNT	405
	TERM DEPOSIT ACCOUNT	155.54
	TOTAL INCOME	14833.38
EXPENSES	GENERAL ACCOUNT	12438.33
	RESCUE ACCOUNT	0
	TOTAL EXPENSES	12438.33
	NET INCOME	2395.05
BALANCE SHEET AT 30 JUNE 2016		
	GENERAL ACCOUNT	8236.78
	RESCUE ACCOUNT	7320.6
	TERM DEPOSIT ACCOUNT	7267.89
	TOTAL ASSETS	22825.27
	CURRENT LIABILITIES	0
	NET ASSETS	22825.27

CAVALIER KING CHARLES SPANIEL CLUB OF VICTORIA

2018 OPEN SHOW-18 TH NOVEMBER

JUDGE MR PAUL NICHOLS

ENTRIES 28

BEST IN SHOW

BEST DOG /BEST OPEN IN SHOW

DAPSEN CHIP OFF THE OL BLOCK-D PETERSEN

RUNNER UP TO BEST IN SHOW

BEST BITCH

INNESVEIL LOVE SPELL -J MC INNES

RESERVE BEST DOG

BRADESJUST GOLD (AI)-B SCHMIDT

RESERVE BEST BITCH

INNESVEIL RHYTHM AT MIDNIGHT-J MC INNES

BEST PUPPY IN SHOW

INNESVEIL HOGANS HERO (AI) - J MC INNES

BEST OPPOSITE PUPPY IN SHOW

INNESVEIL HOGANS JEWEL (AI) -J MC INNES

BEST MINOR IN SHOW

DAVENTRI ICE DANCER- P FERNLEIGH

BEST PUPPY IN SHOW

BRADESJUST GOLD (AI)-B SCHMIDT

OPPOSITE PUPPY IN SHOW

INNESVEIL NORTHERN LIGHTS- J MC INNES

BEST JUNIOR IN SHOW

DAPSEN THE DESTROYER- D PETERSEN

OPPOSITE JUNIOR IN SHOW

KORGIL TOURMALINE - G GILLIES

BEST INTERMEDIATE IN SHOW

INNESVEIL RHYTHM AT MIDNIGHT-J MC INNES

OPPOSITE INTERMEDIATE IN SHOW

INNESVEIL LOVES DESIGN - J GIGGINS

BEST OPEN IN SHOW

DAPSEN CHIP OFF THE OL BLOCK-D PETERSEN

OPPOSITE OPEN IN SHOW

INNESVEIL LOVE SPELL -J MC INNES

BEST HEAD

INNESVEIL LOVE SPELL

BEST CHAMPION

CH MATMOR IN SOCIETY PAGES-S WRAITH

OPPOSITE CHAMPION

CH LAKEISHA LORD SPENCER-M CREEK

BEST NEUTER
NZ CH AUST GR CH NEUT CH INNESVEIL CLASSIC DESIGN- J MC INNES
OPPOSITE NEUTER IN SHOW
NEUT CH CAVALRITE SIR LANCELOT- J GIGGINS

BEST BLenheim COAT
INNESVEIL LOVES DESIGN

BEST RUBY COAT
CH CLARELY SHINE ON ME -J KELLY

BEST TRICOLOUR
DAVENTRI ICE DANCER

BEST BLACK AND TAN
CH CLARELY PAINT IT BLACK RN JC
BEST BRACE J KELLY-CH SHINE ON ME & CLARELY TILLY BE IN ME HEART

Cavalier King Charles Spaniel Club of Victoria
Open Show 18/11/18
Judge: Mr Paul Nichols (Dunsfold)

Champion Dog (2/2):

1st Ch Lakeisha Lord Spencer (Creek). Good moving dog with substance and well balanced. Good spring of rib, maintains topline on the move. Lovely dark round eye. Beautifully prepared coat. Broad skull and well filled muzzle.

2nd Ch Clarelly Paint it Black RN JC. (Kelly). Good spring of rib and topline. Dark pigment on eyes and nose. Carried tail a little gaily today.

Baby Puppy Dog (1/1).

1st Innesveil Hogans Hero (AI (McInnes). Lovely soft silky coat. Well shaped head with broad skull and well filled under the eyes, tapering to a wide nose. Large, dark lustrous eyes, dark black pigment on nose. Just dropping his shoulders on the move at the moment so topline on the move little downward. Promising puppy as he build his confidence. **Best Baby.**

Puppy Dog (1/1)

1st Brades Just Gold (AI) (Schmidt). 9 mo old dog. Beautiful size and shape, with moderately strong bone and substance for size. Good spring of rib really well muscled. Happy and gay young fellow who moved happily on a loose head, the epitome of Cavalier temperament. Lovely dark eyes. Handsome masculine head with the lovely Cavalier gentle expression. Ears slightly low set. Beautiful exhibit, excellent presentation, thanks for bringing him. **Reserve Dog and Puppy in Show.**

Junior Dog (1/1)

1st Dapsen The Destroyer (Petersen). Lovely size. Beautiful level topline standing and on the move. Tail well set on. Very well balanced, well laid back shoulder. Very pretty head with dark pigment. Would like slightly more spring of rib and substance. A slower maturing boy who would be expected to fill out and blossom with age.

Intermediate dog (2/2)

1st Innesveil Loves Design (Giggens). 2 yo well marked blenheim. Lovely size and shape, moderate bone in proportion to size to give correct substance and balance. Ideal proportions of height to length. Level back with good spring of rib and short coupled, which means he maintains level topline standing and on the move. Beautiful head piece with a broad skull and well filled under the eyes tapering to towards the muzzle, and high set ears used to good effect in supporting a gentle overall expression. Well presented silky perfectly marked Blenheim coat. A little sore today on the show side rear leg hindering his movement, but his overall quality gave him the class.

2nd Lakeisha Blaze of Fire (Creek). 20 month old dog. A more substantially boned dog who is a bit unbalanced at this stage with length of leg relatively longer than desirable to length. Broad skull and dark eyes, with a pleasing expression which could be a little more gentle.

Open Dog (1/1)

1st Dapsen Chip Off The Ol Block (Petersen). 18 mo old Blenheim. This boy impresses with his ideal size, outline and balance. A real toy spaniel, with a beautifully prepared long silky coat with plenty of feathering but not overdone to distract from the outline and movement. On the move his perfect balance of forward reach and rear extension is a delight to watch, particularly because he exudes an active, alert, sporting temperament. He has a really pleasing gentle expression with captivating large round lustrous eyes. Not an overly large head piece and not too much breadth of muzzle, he exhibits a desired broad skull, sufficient fill below the eyes, and tapering to well developed (but not pendulous lips). On the move he carried his tail not much above the level of the back and so his topline is not spoilt. **Best Dog and Best in Show.**

Champion Bitch (3/3)

1st Ch In The Society Pages (Wraith). Beautifully sized and shaped rich red ruby of 17 mo. Maintains outline standing and on the move with well set on tail carried level which distinguished her in the class. Moderate head piece in line with her maturity. Relatively broad skull, well filled below the eyes tapering to a neat finish of the lips, which will likely fill and soften even more with time. Her lovely large round dark lustrous eyes creates her gentle expression. Silky coat prepared to perfection. A happy outgoing girl who shows confidently, setting off her outline and movement, which is a delight to watch.

2nd Ch Dapsen Mirror Mirror (Petersen). Another top class bitch of 19 months. I prefer the balance of substance, size and spring of rib of this girl to the 1st place getter. Level back and short loin. Free moving with plenty of drive from behind. She has a lovely broad skull and shallow (or sloping really) stop with balanced shorter length of muzzle to skull. Gorgeous large round dark eyes and gentle expression. Face well filled below the eyes with well developed lips and well developed (wide) black nose. On the move carried her tail a little gaily and perhaps not set on as well as 1st place, but splitting hairs on the day.

3rd Ch Clarelly Shine on Me (Kelly).

Baby Puppy Bitch (1/1)

1st Innesveil Hogans Jewel (AI) (McInnes). Litter sister to the baby dog. Perfectly marked Blenheim with rich red patches and silky coat. May be a little light on for size and substance for five months, and not so confident indoors today. Very feminine head with large dark eyes. Didn't use ears to advantage to set off her expression.

Minor Bitch (1/2)

1st Daventri Ice Dancer (Daventri). Well marked tri bitch with good balance of bone and substance to size, and a beautiful silky coat. Excellent ear set. Nice dark eyes, good rich ruby markings in all the right places. Coming into season so not moving as freely as she might. **Best Minor.**

Puppy Bitch (3/3)

1st Innesveil Northern Lights (McInnes). Lightly marked 9 mo old bitch. Ideal shaped head piece with high set ears, broad skull and correct length of muzzle to skull, with large dark round eyes with black pigment creating pleasing gentle expression.

2nd Brades Love Couture (Schmidt). Correctly sized Blenheim bitch who is going through an unbalanced stage which affected her outline and movement today.

3rd Clarelly Black Pearl (Kelly).

Junior Bitch (2/3)

1st Korgil Tourmaline (Gillies). A really lovely feminine bitch who impresses with her gentle expression from large dark round eyes and correct balance of skull to muzzle and its proportions. Has a good outline with moderate neck into well laid shoulders, good spring of rib and short loin. Moderate bone in perfect proportion to size and shape. Not so confident inside today so didn't move as steadily, particularly in rear so didn't show off her reach and drive which she should be able to do by construction. With more confidence she is the whole package. **Best Junior.**

2nd Clarelly Till be In Me Heart (Kelly). Really well made deep rich ruby with good spring of rib, and adequate lay of shoulder. Expression could be more gentle as she matures, but set off with large dark round eyes and high set ears.

Intermediate Bitch. (4/4)

1st Innesviel Rhythm At Midnight. 22 mo old Black and tan bitch who impresses with her ring presence, confidence, substance, outline and movement. She has a silky jet black coat and a

strong broad head and muzzle in good proportion to her size and substance. A real sporting spaniel in toy size who has a promising future. **Best Intermediate.**

2nd Woodhay Jameka (AI) (Ingpen). Very pretty and feminine 19 month old blen bitch with many great qualities. Lovely dark round eyes and darkly pigmented nose gives a gentle expression. Level back and short loin with good spring of rib. Today could have been slightly more confident on the move with more drive from the rear.

3rd Brimarvan Garden Of Eden (Van Geyzel M).

4th Caribelle Sheezarizona (Kelly).

Open Bitch (1/2)

1st Innesveil Love Spell. Lightly marked (especially on show side) Blenheim bitch of 2 years and 10 months of ideal size and outline, with moderate bone and substance that matches size perfectly, and a most delightful sweet gentle Cavalier expression due to her broad skull, well filled face below the eyes, and well developed lips meeting at a jet black nose. She has long feathering with her silky coat, and so was surprised to hear she was coming back from a litter. She could be slightly more free moving to create the elegance in action desired, but she was carrying a little more weight than ideal and perhaps more muscle tone would assist. On the show side the markings could be off putting and throw out the outline, but she is correct (patches of brown with a pearly white background) and slightly longer than tall, with lovely balance of bone to size and weight. Delighted to award her **Best Bitch and Runner Up in Show.**

Neuter Dog

1st Neut Ch Cavalrite Sir Lancelot (Giggins). Beautifully presented upstanding boy of 4 years. While a little larger cast overall than ideal, he is well balanced and maintains a good level topline standing and on the move. He has a moderate head with a pleasing expression due to lovely dark round eyes.

Neuter Bitch

1st Nz Ch and Aust Gr Ch Neut Ch Innesveil Classic Design.(McInnes). Despite not looking her absolute best today at nine years and rushed grooming, this quality bitch could not be denied **Best Neuter**. She still maintains her ideal outline of height to length, a level topline because of her well sprung ribs, short loin and broad back - she exudes Cavalier from her correct head piece, dark round eyes and gentle expression, and her happy outgoing movement and willingness to please.



INCREDIBLE IN EVERY DETAIL

BEST OF BREEDERS.

At ROYAL CANIN®, we obsess over purebred dogs - and the perfect nutrition for each of them. ROYAL CANIN® formulas are developed with each breed's unique needs in mind for superior muscle tone, coat health and digestion.

As a breed expert, you know the right nutrition can unlock the magnificence inside your dogs, and so do we.



Eye conditions in Cavalier King Charles Spaniels

Information for breeders and pet owners

Melbourne EyeVet

Mulgrave [Essendon](#) Bundoora [Frankston](#) Geelong [Bendigo](#) Wodonga [Traralgon](#) Darwin

Conjunctivitis

Cavalier KCS can often develop red eyes, which is more common when they are young. Conjunctivitis is inflammation of the eyelid and eyeball lining and is usually due to allergies. Anything that can cause allergies, i.e. hayfever can cause conjunctivitis including dust, grass, plants, pollen and smoke. Treatment includes bathing the eyes with, for example Calendula Tea, and drops or ointments such as topical anti-histamines or cortisone.

Dry Eye

Dry eye is a condition in which there is sub-optimal tear production. There are 3 categories of dry eye in CKCS: congenital dry eye, curly coat and dry eye syndrome (genetic), and conventional dry eye developing in adult dogs.

Congenital dry eye can be difficult to treat, and treatment is aimed at trying to improve tear production and keeping the eye comfortable. Surgery may be required, even eye removal in some cases.

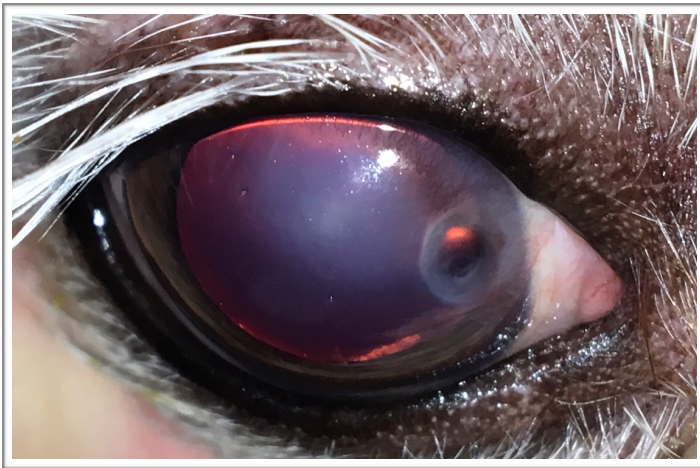
Curly coat dry eye syndrome is a severe congenital condition seen in the breed affecting the skin, coat, claws and eyes of affected puppies. There is a genetic test for this condition and good breeders know the status of their breeding dogs.

The most common dry eye is due to immune-mediated disease/inflammation. This can also develop due to chronic conjunctivitis or previous cherry eye (third eyelid gland prolapse that is replaced with surgery). Treatment with immuno-suppressive drugs like cyclosporin (ointment or drops) and tacrolimus are used to improve the tear readings and return the eyes to optimal health. Lifelong treatment is required. If not treated, dry eye can result in serious corneal ulcers, scarring and vision loss.



Extra eyelashes/distichiasis

Distichia are abnormal extra eyelashes that grow from the glands on the eyelid edge. In most CKCS they are fine and float in the tear film and don't cause problems. However in some dogs, the distichia are thicker and can cause irritation and corneal ulcers. Surgery is necessary in such cases to either cut them out by the root or freeze the root to destroy it. This surgery is a specialist procedure. If your Cavalier is diagnosed with this, let the breeder know as they are passed on from the parents. In Australia in 2017, the incidence of distichiasis was 4%.



Corneal ulceration

Due to the prominence of the eyes in this breed, trauma resulting in a corneal ulcer is not uncommon. This breed often has low tear production, a slower blink reflex, and can have a reduced ability to spread the tears over the globe due to some having oversized eyelids. All of these factors lead to an increased chance of trauma/corneal ulceration.

An ulcer is a scratch of the clear

surface of the eye - the cornea. A simple ulcer should heal within 5-7 days with simple treatment (ointment and anti-inflammatories). More serious ulcers, including deeper ulcers or those that are infected, require more involved treatment and referral to an eye specialist is recommended. If an ulcer doesn't heal within 1-2 weeks or appears to be getting worse, consider a referral to an eye specialist.

Corneal injury

It is worth noting that all new puppy owners should be aware of potential corneal injury when a puppy is introduced into a house already occupied by a cat. For some reason, this breed is over-represented in such injuries, but any new puppy is at risk. It is a common history that the friendly puppy raced up to the cat who lashed out and caused a corneal laceration. These injuries can be severe and if not properly checked may result in loss of the eye within 4-6 weeks (due to rupture of the lens inside the eye). Careful, controlled introductions and fully supervised interactions should be carried out until it is clear that the cat is no longer threatened by the dog (this may take months).

Corneal lipid dystrophy

Cavalier KCS are amongst the many breeds that develop corneal lipid dystrophy. This is usually a bilateral, symmetrical, noninflammatory corneal syndrome that is often familial. Centrally located circular or oval crystalline deposits are present just under the surface of the cornea. These white to grey spots typically appear between 2 and 5 years of age. Medical treatment is not usually effective and these lesions rarely cause significant visual impairment. Incidence in the US is 8-10% of dogs examined for CERF. In Australia the incidence was 2% in 2017.





Cataract

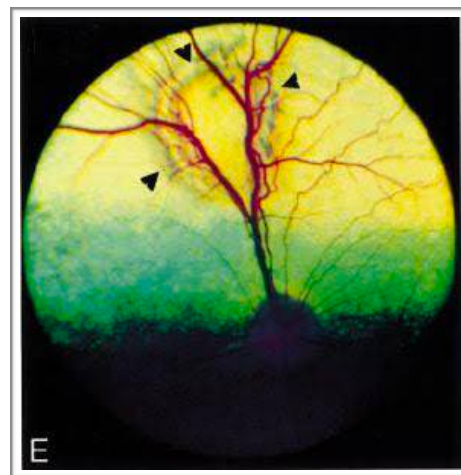
A cataract is an opacity of the lens inside the eye. Both congenital and adult onset cataracts have been described in this breed, including star cataracts (small focal opacities at the centre, back of the lens). In the CKCS, onset is usually at an early age (less than 6 months), with rapid progression to complete cataract resulting in blindness. Fortunately due to diligence of the many good breeders, the incidence is now very low. Breeding dogs should be screened (annually for

males and prior to breeding for females). Incidence in the US is approximately 4%. In Australia in 2017, 1% had hereditary cataract.

MRD - Multifocal Retinal Dysplasia

Retinal dysplasia is another inherited condition seen in this breed. Linear, triangular, curved or curvilinear areas of retinal folding is seen. If these have not disappeared by 12 months of age, a diagnosis of MRD is made (see middle photo). It is a congenital, non-progressive condition with varying degrees of severity. MRD does not affect vision (unless perhaps in extremely severe cases). Affected dogs should not be bred as more severe forms may be seen,

although the genetic relationship between folds and more severe forms is undetermined. A second form of retinal dysplasia is geographic retinal dysplasia when a giant retinal fold, often circular or U-shaped, is seen. This area of retina is abnormal and can result in



focal retinal detachment, and even predispose the affected dog to total retinal detachment and vision loss. A third form, total retinal dysplasia is extremely rare in this breed.

Affected eyes are blind. The incidence of MRD in the US has dropped from around 10% in the 1990's to less than 5% in 2014. Geographic retinal dysplasia has reduced from 4.3% to 1.8% incidence over the same time. Total retinal detachment has reduced from 7 in 1000 to 1 in 1000 CKCS examined for CERF in US. In Australia in 2017, 1% of CKCS had MRD and 2% geographic RD.



ACES - Australian Canine Eye Scheme

Eye Certification via ACES is recommended to assess dogs for breeding. This is a full eye examination that will pick up many inherited eye conditions including distichiasis, retinal dysplasia, microphthalmos (small eye), cataract and other lens deformities seen in recent years such as lenticonus. Only registered veterinary eye specialists who have been listed as ACES Panelists can perform this test. Breeders will be presented a certificate with the full results of the test. Melbourne EyeVet works closely with breeders to ensure that the puppies they breed have optimal eye health.

Prospective owners should expect to be provided with copies of all the testing of the parents including copies of eye certificates, heart certificates and DNA test results. A link to the annual reports by breed can be found at <https://www.ava.com.au/aces>



BIG DAY OUT FOR DOGS

fun for the whole family

JOIN US ON THE

09TH

OF

DEC

State Dog Centre, 655 Westernport Hwy, Skye

FREE ENTRY

WELL BEHAVED DOGS ON LEAD ARE WELCOME

10.30AM
TO 4.00PM

SEE YOU THERE!

Find out more:
dogsvictoria.org.au

DON'T MISS THE:

- Canine Christmas Market - get Christmas gifts for your dog loving friends
- Demonstrations of dog sports and meet your favourite dog breed
- Activities for the kids including face painting and jumping castle





INCREDIBLE IN EVERY DETAIL

THE FINISHING TOUCH.

At ROYAL CANIN®, we obsess over purebred dogs - and the perfect nutrition for each of them. ROYAL CANIN® formulas are developed with each breed's unique needs in mind for superior muscle tone, coat health and digestion.

As a breed expert, you know the right nutrition can unlock the magnificence inside your dogs, and so do we.



DOGS VICTORIA 'NIGHT OF NIGHTS SPECTACULAR'

Top Show Dog and Top Show Puppy in Victoria for 2018

The Nights of Night, Dogs Victoria's most prestigious event for show dogs will take place on

**Saturday 2 February 2019 at the Bulla Exhibition Centre
commencing 4pm**

- **Entry Fee:** \$15 per dog; Catalogue: \$2
- **Meal ticket:** \$30 per person; Smorgasbord Dinner will be provided from 6pm to 8pm

Entry check-in is:

Top Puppy of the Year - 2.30pm to 3.30pm

Top Dog of the Year- 2.30pm to 5.30pm

The Puppy of the Year will be determined by random draw conducted openly in the centre of the ring once check in is closed. Judging will begin at approximately 4pm and will proceed by elimination until the final two puppies remain.

The Top Dog of the Year random draw process will be repeated as above and will be conducted during the dinner break. Judging will begin at approximately 7pm and will proceed by elimination until the final two dogs remain.

The Top Puppy of the Year will be announced prior to the Top Dog of the Year announcement.

And don't forget the popular Best Dressed Gent and Lady competition, where glamour and elegance are celebrated. Dress in your evening finest and share your style with the crowd!

The Calabria Club bar and bistro will be open for those wishing to purchase drinks or pizza.

We hope you can join us for this prominent and social event and showcase your dog as one of the very best in the state!



Night of Nights Spectacular Top Show Dog and Puppy of the Year 2018

Saturday 2 February 2019

Bulla Exhibition Centre commencing 4pm

Please return completed entry by Friday 18 January 2019 to Anna Bisak abisak@dogsvictoria.org.au

ENTRANT

☐ TOP DOG ☐ TOP PUPPY

A Copy of the Best Exhibit/Puppy In Show Certificate Must Accompany Entry

☐ ENCLOSED

Registered Name:

Registered No:

Date of Birth:

Breed:

Call Name:

Sire:

Dam:

Bred By:

Owned By:

Membership No:

CONTACT DETAILS

Name:

Contact No:

Email:

PAYMENT

ENTRANT: DOG \$15 x ☐ CATALOGUE \$2 x ☐

DINNER TICKET: PER PERSON \$30 x ☐

(Ticket/s are issued on the night at the reception desk)

Total Payment Received:

Payment Method: ☐ Cheque ☐ Cash (in office only)

☐ Credit Card: Debit my Visa / Mastercard for the amount of \$

Credit Card No:



Exp:



Signature:



Date:

Name (print)

The A-Z of Cavaliers

A	Always Hungry	
		
B	Blenheim / Black and Tan	
C	Clever and Eager to Please	
D	Devoted (they do so love their families)	
		
E	Ears (so lovely and long!)	
F	Fine, Silky Coat	
G	Great Family Dogs	
H	Huggable (oh so very huggable!)	

I	Insightful (mine always know when I've had a bad day and need cuddles)
J	Joyful
	
K	Kind
L	Laps (an empty lap is a guaranteed magnet for a Cavalier)
	
M	Merry

N	Naughty (because let's face it - when they're naughty, they're REALLY naughty)	
		
O	Outgoing	
P	Pets (the absolute best you could ever wish for)	
Q	Quiet (sometimes!)	
R	Ruby	
S	Snoring (I know one of mine could have snored for the Olympics)	
		
T	Tricolour	

U Ultimate Bedwarmer



V Very Good Watchdog!



W	Wagging Tail
	
X	X-Ray Vision (especially when it comes to food!)
Y	Your Very Best Friend
Z	Zoomies!

Royal Melbourne Dog Show Results 2018
Judge
FRANCESCO COCHETTI (ITALY)

CHALLENGE BITCH & BEST OF BREED & Best in Group 2

74 **Jennifer Egan & Jacqueline Weekes**: [SUP.CH.](#) MELLOWAY MAGNIFIQUE 5100065414 20 Jun 2011 **Bred By**: W & J Egan and J & J Weekes **S**: Ch. Cobbets Cockney Rebel (Imp Uk) **D**: Grand. Ch. Melloway Black Pearl

CHALLENGE DOG & RUNNER UP BEST OF BREED

46 **Ms D L Petersen**: [SUP.CH.](#) DAPSEN FLYING HIGH 3100328525 06 Aug 2015 **Bred By**: Exh **S**: Ch. Dapsen Kiss Em And Leave Em **D**: Ch. Dapsen Glitter In Champagne

RESERVE CHALLENGE DOG

45 **Mr M L Morse & Mr W A Henderson**: [SUP.CH.](#) MATMOR A SCANDALOUS AFFAIR 3100303452 01 Mar 2014 **Bred By**: Exh **S**: Ch. Cobbets Cockney Rebel (Imp Uk) **D**: Sup.Ch. Matmor Fun O The Fair

RESERVE CHALLENGE BITCH

59 **Mr M L Morse & Mr W A Henderson**: MATMOR SOCIALITE 3100362194 26 Jun 2017 **Bred By**: Exh **S**: Ch. Matmor Colour Sergeant **D**: Sup.Ch. Matmor Secret Society

BEST BABY PUPPY OF BREED

27 **Mrs J E McInnes**: INNESVEIL HOGANS HERO(AI) 3100376591 20 May 2018 **Bred By**: Exh **S**: Charnell Hogan (Jw) (Imp Uk) **D**: Woodhay Francesca

BEST PUPPY OF BREED

31 **Mrs K M Brooksby**: CH. CAVASHON KINGSMAN 5100102696 05 Oct 2017 **Bred By**: Exh **S**: Ch. Only Rameses Dobry Rok (Imp Pol) **D**: Ch. Cavashon Keep Me In Your Heart



INCREDIBLE IN EVERY DETAIL

FIT AND FINISHED.

At ROYAL CANIN®, we obsess over purebred dogs - and the perfect nutrition for each of them. ROYAL CANIN® formulas are developed with each breed's unique needs in mind for superior muscle tone, coat health and digestion.

As a breed expert, you know the right nutrition can unlock the magnificence inside your dogs, and so do we.

